

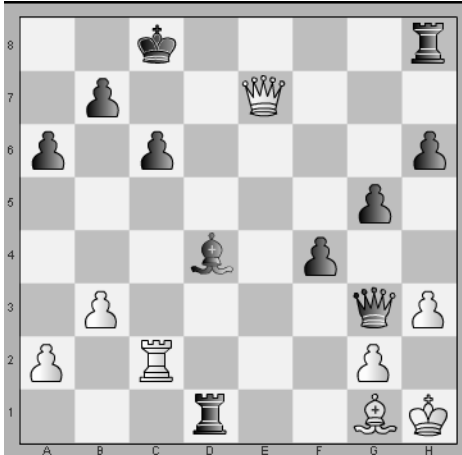
Daj mata w 1 posunięciu.

Wszystkie zadania pochodzą z rozgrywek uczestników Mistrzostw Polski w Szachach Szybkich i Błyskawicznych (Koszalin 04-07.08.2016r.)

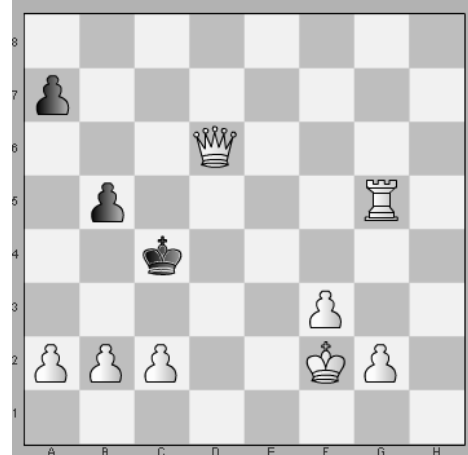
Jeśli widzisz pod zadaniem wynik 1:0 - szukaj zwycięskiego ruchu dla białych.

Gdy pod zadaniem znajduje się wynik 0:1 - odnajdź posunięcie dające zwycięstwo czarnym.

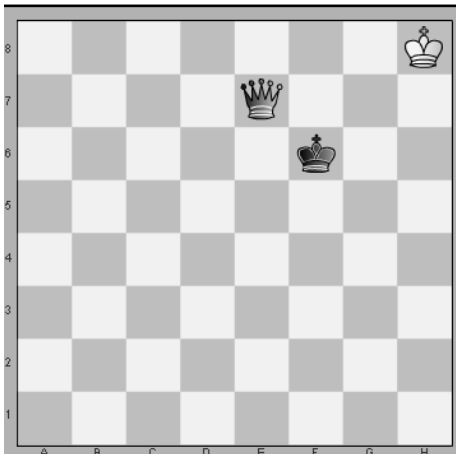
Powodzenia!



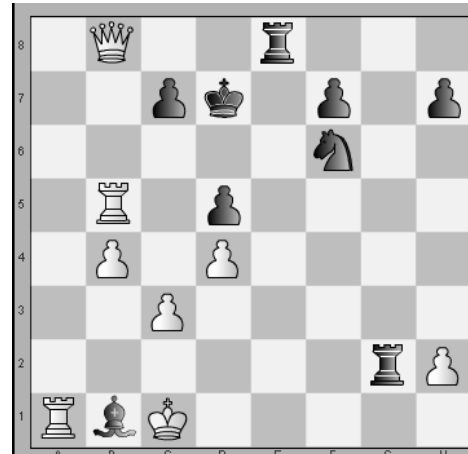
Jadwiga Pieczewska - Barbara Kowalczyk 0:1



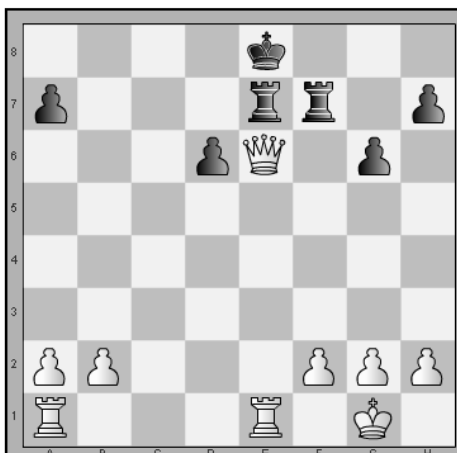
Magdalena Pawicka - Izabela Tokarz 1:0



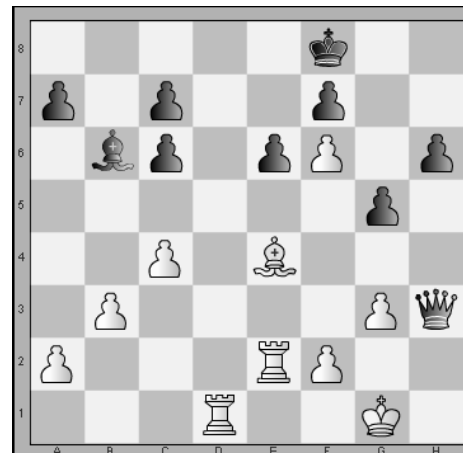
Nikola Grzesik - Zuzanna Jędrzejewska 0:1



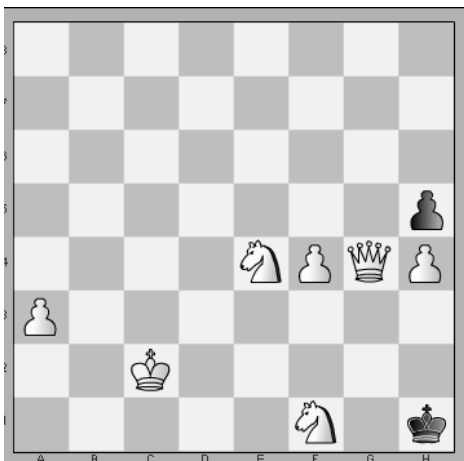
Klara Szczotka - Maria Patejko 0:1



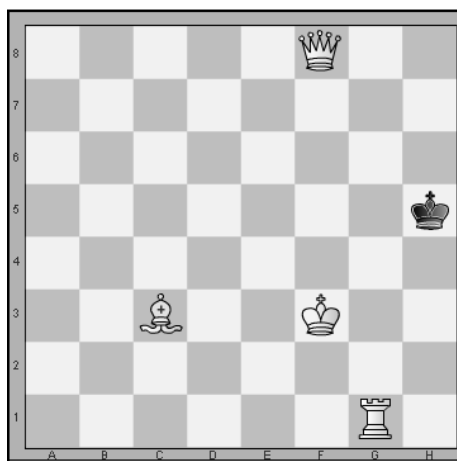
Zofia Roszkiewicz - Sandra Papierz 1:0



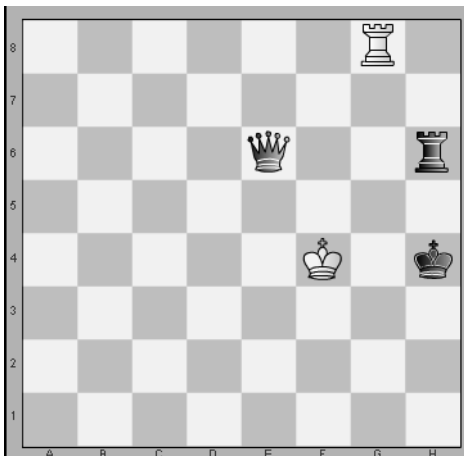
Filip Nowak - Dariusz Dzięwoński 1:0



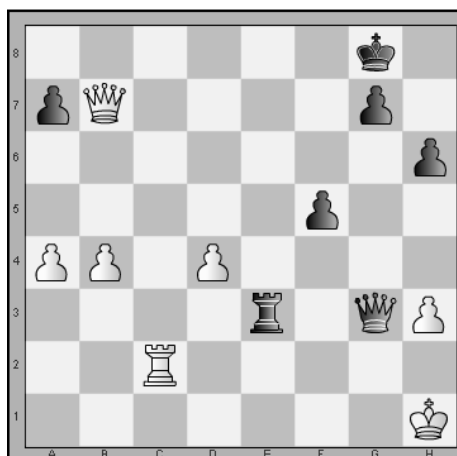
Hubert Meers - Grzegorz Iwaszkiewicz 1:0



Anna Czarniecka - Monika Borowik 1:0



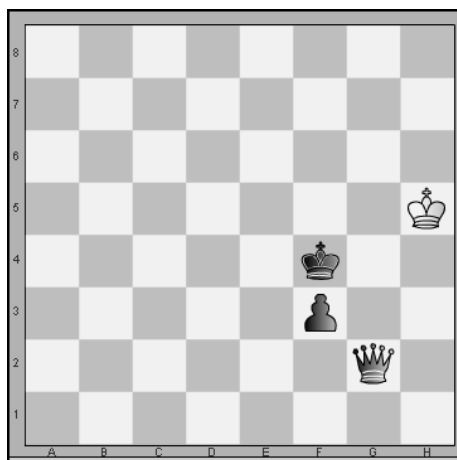
Klara Szczotka - Zuzanna Gaszka 0:1



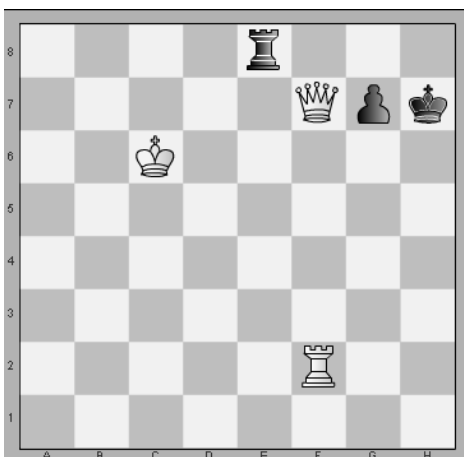
Wiktoria Bocwińska - Joanna Pietryk 0:1



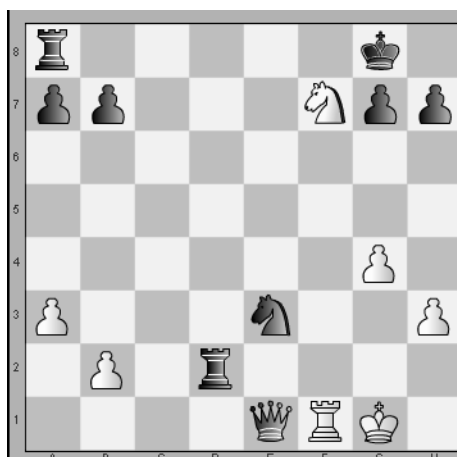
Weronika Dudzińska - Alicja Mościcka 1:0



Joanna Pietryk - Aleksandra Pastuszka 0:1



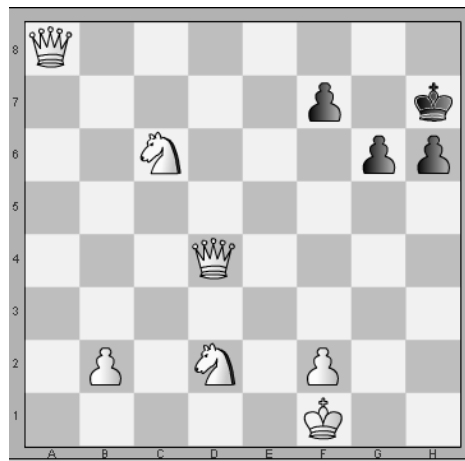
Oliwia Ścista - Aleksandra Gradzka 1:0



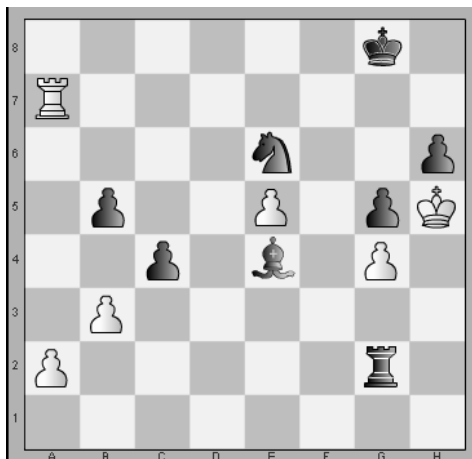
Weronika Dudzińska - Monika Borowik 0:1



Pola Seemann - Hanna Byszevska 1:0



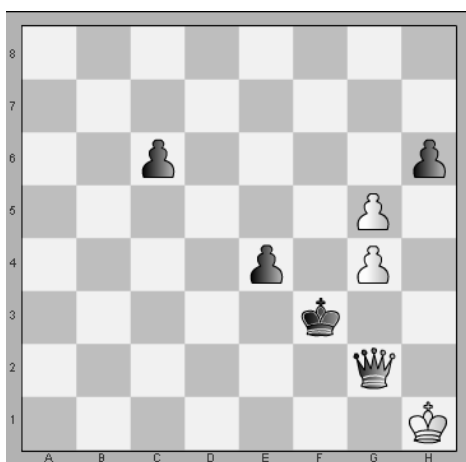
Oliwia Ścisła - Lena Obrochta 1:0



Jan Skrzypiński - Jakub Seemann 0:1



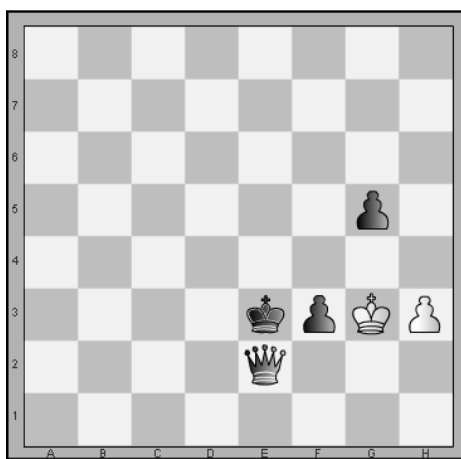
Zuzanna Zwolińska - Zuzanna Arciszewska 0:1



Adam Bartoszczyk - Hubert Zięba 0:1



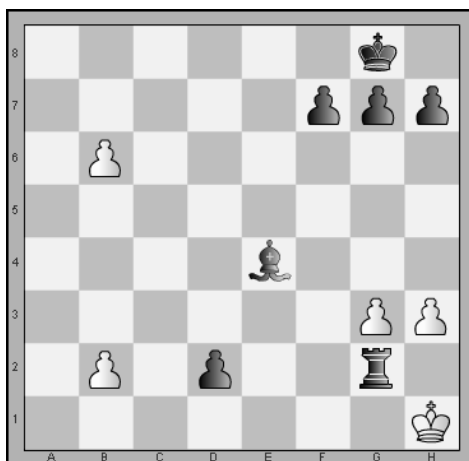
Klara Szczotka - Aleksandra Pawicka 1:0



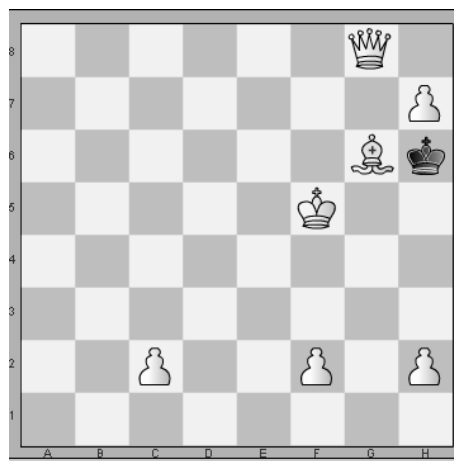
Julia Gaczol - Izabela Tokarz 0:1



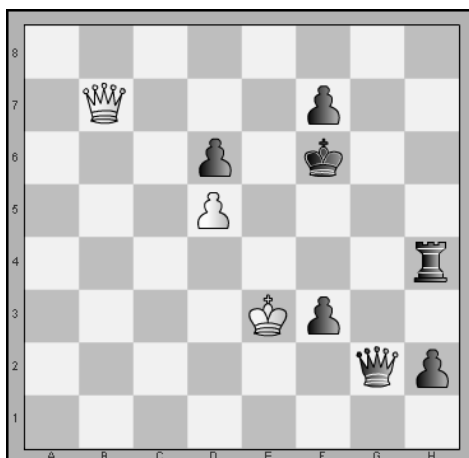
Pola Seemann - Kinga Gładyszewska 1:0



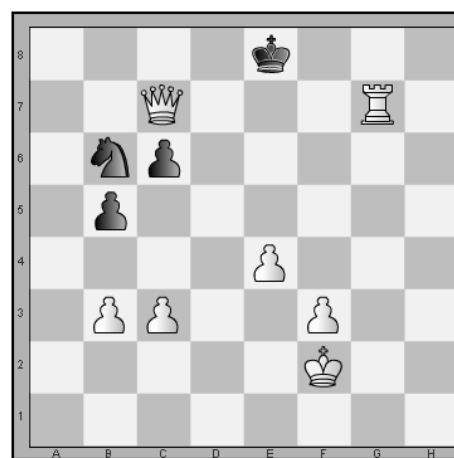
Maciej Wolak - Jakub Seemann 0:1



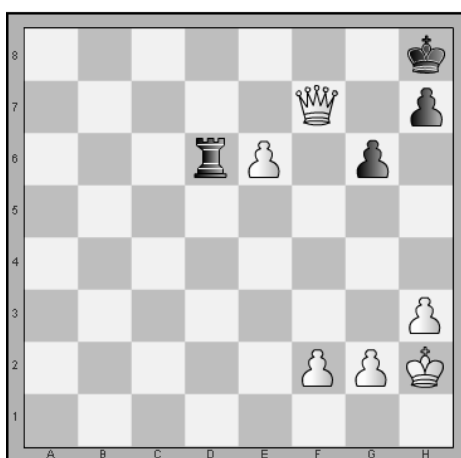
Maciej Jeda - Michał Taranowicz 1:0



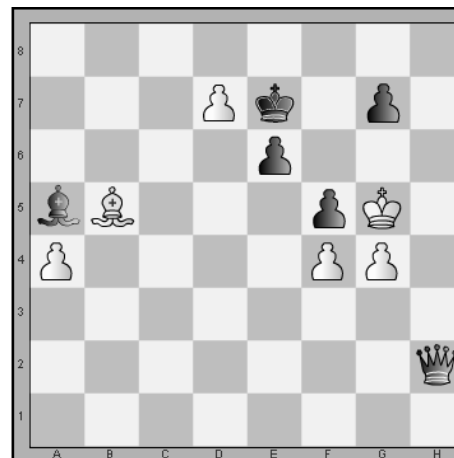
Miłosz Murawski - Franciszek Paprocki 0:1



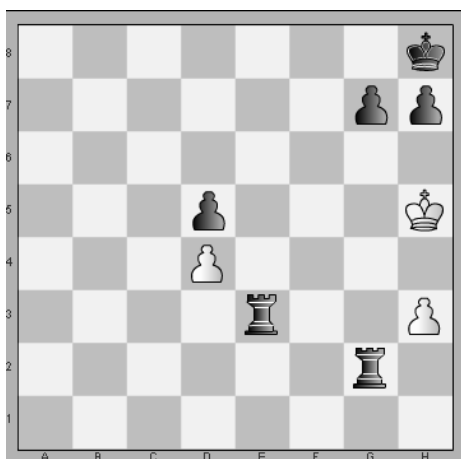
Piotr Karwacki - Gabriel Jarocki 1:0



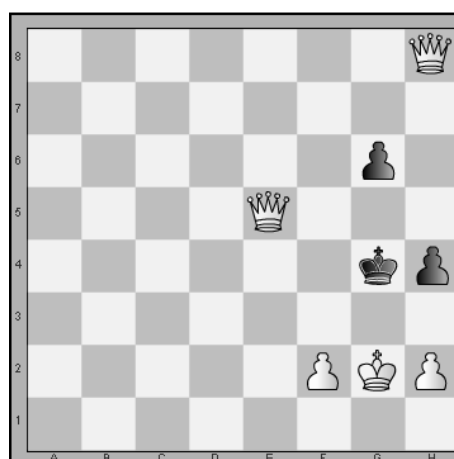
Zuzanna Arciszewska - Izabela Tokarz 1:0



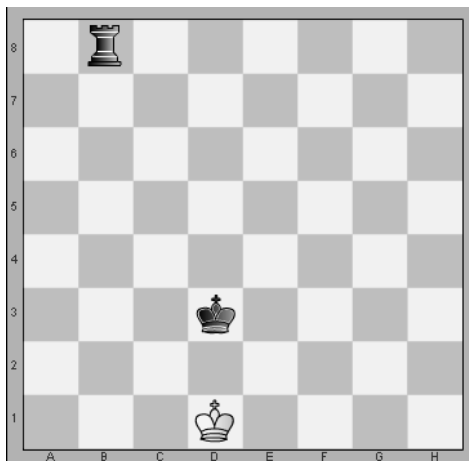
Krzysztof Matela - Marek Madej 0:1



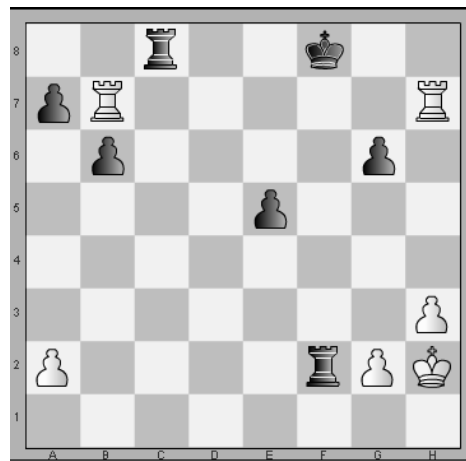
Paulina Rojek - Martyna Starosta 0:1



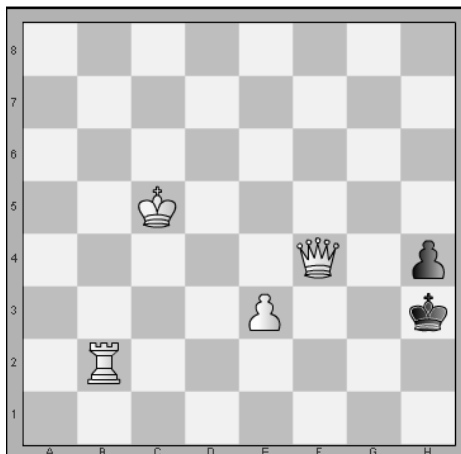
Kinga Matuszewska - Anna Czarniecka 1:0



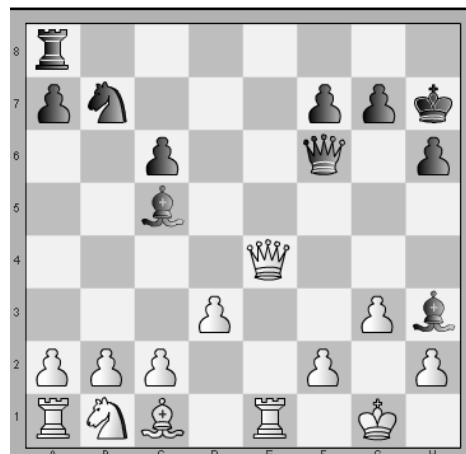
Filip Pawicki - Jakub Seemann 0:1



Zuzanna Gaszka - Pola Seemann 1:0



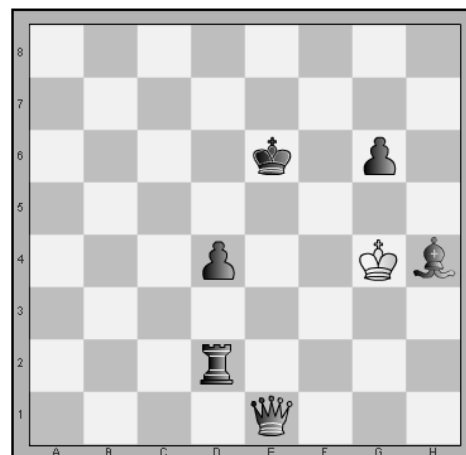
Wojciech Borowik - Jan Skrzypiński 1:0



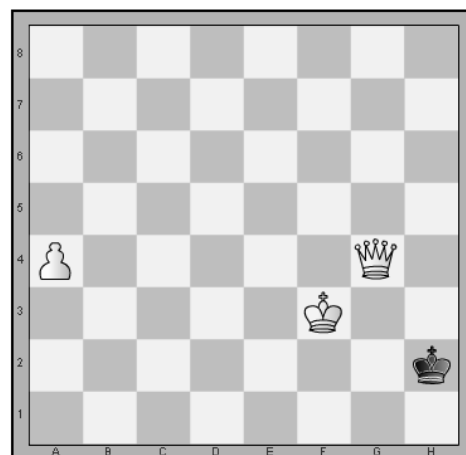
Zuzanna Gaszka - Gabriela Patejko 1:0



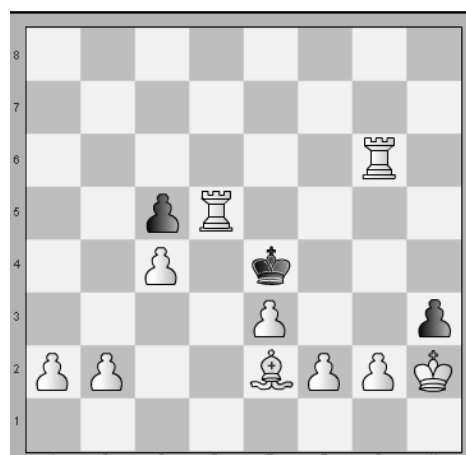
Marcin Molenda - Rafał Buraczewski 1:0



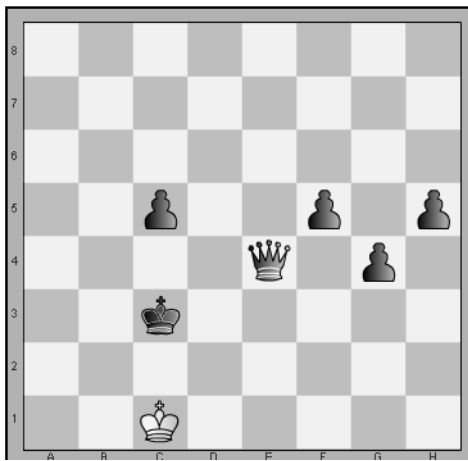
Weronika Dudzińska - Klara Szczotka 0:1



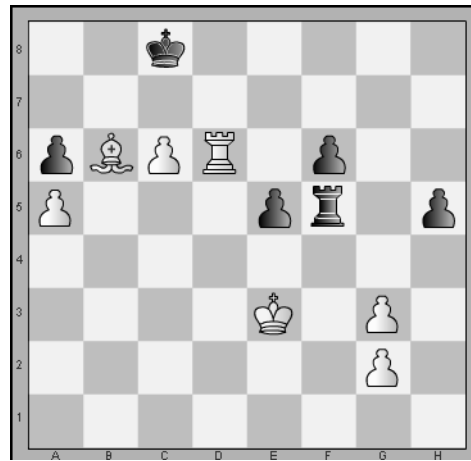
Aleksandra Pastuszka - Klara Szczotka 1:0



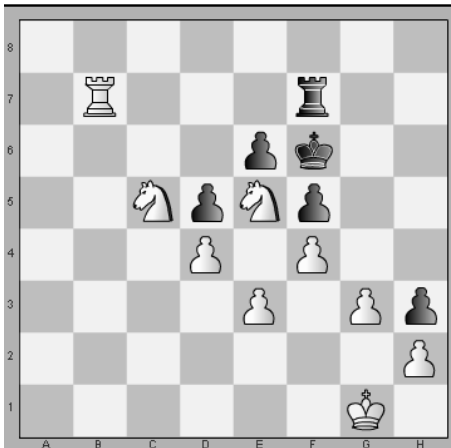
Aleksandra Pastuszka - Kinga Lupińska 1:0



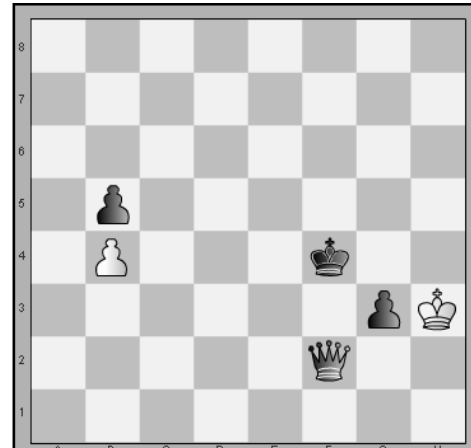
Hubert Zięba - Jan Klimkowski 0:1



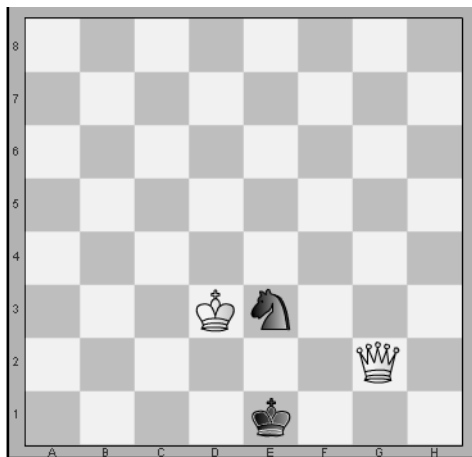
Weronika Zabrzańska - Karolina Więcek 1:0



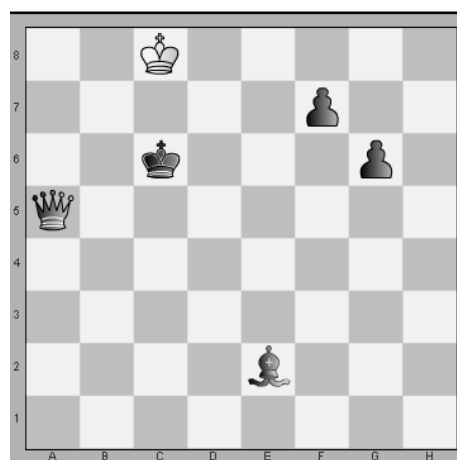
Wojciech Borowik - Tymon Jaworski 1:0



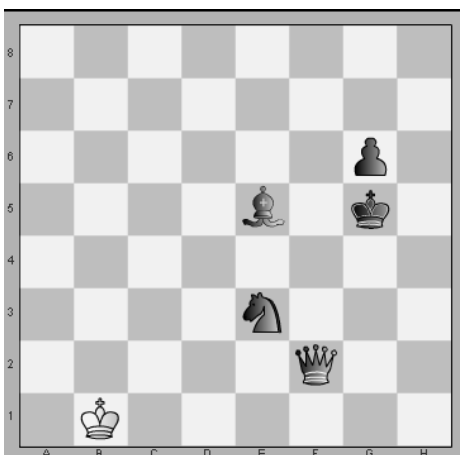
Barbara Kowalczyk - Magdalena Pawicka 0:1



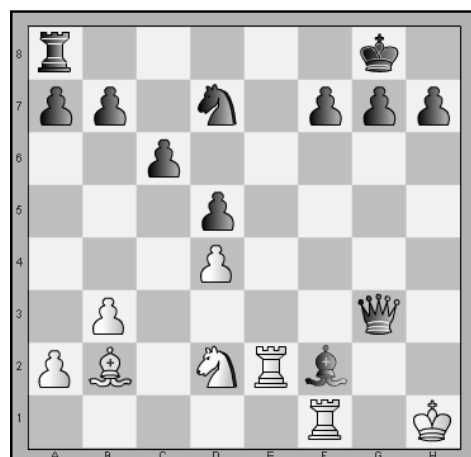
Jakub Seemann - Jacek Adamala 1:0



Izabela Tokarz - Ewa Barwińska 0:1



Emilia Szopa - Lena Mroz 0:1



Dariusz Dziewoński - Grzegorz Iwaszkiewicz 0:1